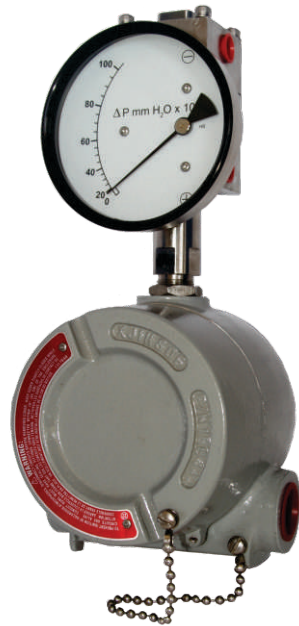


PISTON OR DIAPHRAGM SENSORS



EXPLOSION PROOF

SALIENT FEATURES

- Cost effective and reliable.
- Simple and compact design.
- Available in piston and diaphragm sensors
- Adjustable reed contact switching.
- Gauge+ switch or only switch models.
- Manufactured in ISO certified plant.
- Exported worldwide.

Ambit Instruments manufactures quality explosion proof differential pressure instruments are used in environment containing hazardous vapours, gases, or particulates.

Switches and electrical connections are mounted in special UL, CSA, FM, CENELEC approved enclosure. The cast Aluminium housing has a provision of two mounting slots, two 3/4" NPT electrical conduit ports.

They meet following specifications:

Class I, Gr. B, C & D, Class II, Gr. E, F & G; and Class III. They also meet NEMA 3, 4X, 7, 9 & 12 specifications.

The instruments can be equipped with 1 or 2 SPST or SPDT reed switches.

APPLICATIONS :

Hazardous locations in petrochemical industries, process industries, explosive conditions, and oilfield sectors.



Ambit Instruments Pty Ltd.

42 Titan Drive, Carrum Downs

Victoria 3201, Australia

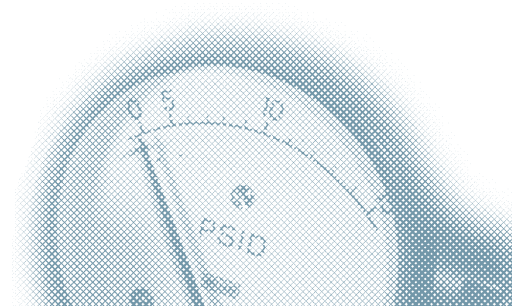
Phone : +61 3 9776 8888

Fax : +61 3 9776 8656

Email : contact@ambitinst.com.au

Website : www.ambitinst.com.au

MAGNETIC PRINCIPLE



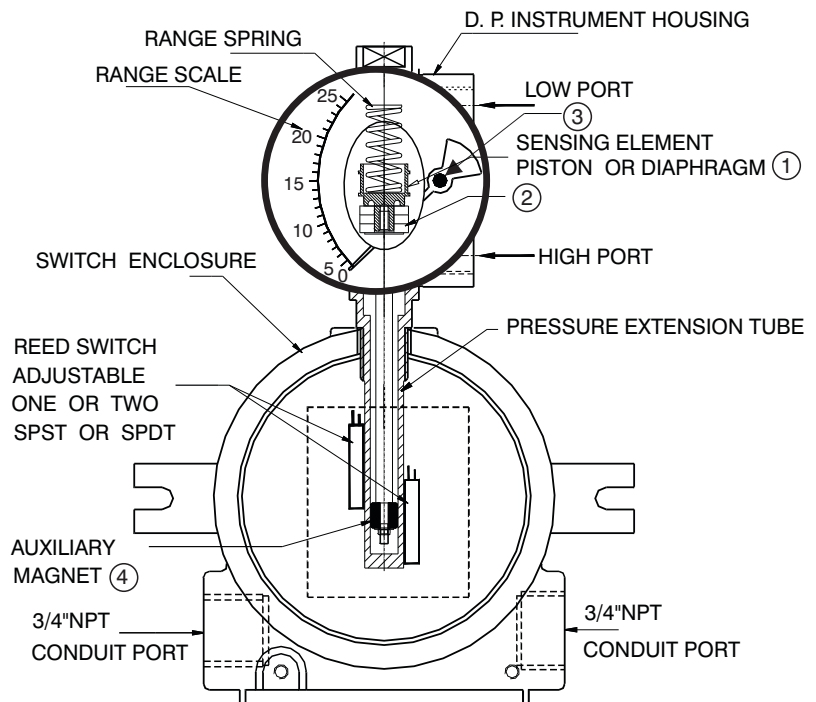


OPERATING PRINCIPLE

Variations in pressure between high and low ports is sensed by a piston or diaphragm sensor (1) which moves in proportion to the pressure difference. A primary magnet (2) is attached to the sensor and moves with it in the same proportion. A rotary magnet (3) with pointer is magnetically coupled with the primary magnet, and is situated in an isolated cavity. Movement of rotary magnet with pointer indicates differential pressure on the dial. Process fluids are isolated from dial case and switch enclosure.

An auxiliary magnet (4) situated in the tube extension also moves with the pressure sensors. Reed switches mounted on the extension tube are activated due to interaction between switch contacts and field of auxiliary magnet. Switches can be adjusted to open or close at preset points.

EXPLOSION PROOF INSTRUMENTS



TECHNICAL DATA

Explosion proof differential pressure instruments are same as our standard differential pressure instruments where high pressure side is modified with an extension tube and is housed in an explosion proof box in which switches are also located.

Model	200 DPG	200 DGR	300 DGC
Sensor	Piston	Rolling diaphragm	Small convoluted diaphragm
Max. Operating pressure	200 bar / 3000 psi	200 bar / 3000 psi	100 bar / 1500 psi
Max. Differential pressure	10 bar / 150 psi	7 bar / 100 psi	4 bar / 60 psi

HOW TO ORDER

Select a model from individual model data sheets and add “EX” at the beginning of the product code. Also indicate if it is required with or without explosion proof box.

Limitations : 1) As per individual data sheets.

2) We do not recommend flange mounting as explosion box is heavy (1.40 kg / 3.10 Lbs.)

3) High and Low ports are on the right side only, however back connections can also be given.



Akron Electric (USA)



Ambit Instruments Pty Ltd.
42 Titan Drive, Carrum Downs
Victoria 3201, Australia
Phone : +61 3 9776 8888
Fax : +61 3 9776 8656
Email : contact@ambitinst.com.au
Website : www.ambitinst.com.au

COMBINATIONS

Gauge+switch
(with a terminal strip inside)



Switch



Gauge+switch
(Without Ex-proof enclosure)

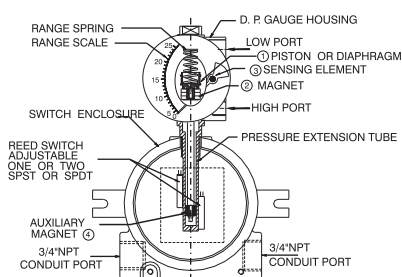


Switch*
(Without Ex-proof enclosure)



*Locally available explosion proof enclosures can be used

ASSEMBLY



EX 200DPG

ΔP Range: 0 to 0.25 upto 10 bar
0 to 5 upto 150 psi

Specifications

Accuracy	±2% of the FSD (Ascending)
Migration	Minor from high to low port
Range	0-0.25 to 0-10 bar or equivalent range in other units
First marking on the scale	20% of the FSD
Sensing element	Piston
Wetted parts	Body material, SS 302 spring, ceramic magnet & seals
Case material & dial size	Stainless steel (SS 304): 2.5", 3.5", 4", 4.5", 6.0" Engineering polymer: 2.5", 4.5", 6.0"
Mounting	Surface, 2" pipe mountings
Maximum working pressure	200 bar for Aluminum & Brass, 400 bar for SS & Monel
Maximum process temperature	0 to 80°C (32 to 175°F)
Body material	Aluminum, Brass, SS 316, Monel
Seals	Buna-N, Viton, EPDM
Window	Float glass(Std.), toughened glass, acrylic & safety glass.
Connection	1/4" NPT(F) (Std.), 1/4" BSP(F) (Opt.)
Porting	Bottom (right side), back
Over range protection	Up to the max. working pressure from high & low side
Protection for gauge & switch	IP 65 / NEMA-4

Options

Liquid filling (glycerine/ silicone)
Red follower pointer
Customer logo
Dual scale
Color band
Filter mesh in (+) connection
Descending calibration

Switches (Adjustable in 20-100% of FSD)

1 or 2 SPSTs with a terminal strip
1 or 2 SPDTs with a terminal strip

Available in engineering polymer (EP) Case

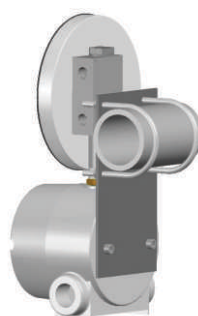


Enclosure Approvals

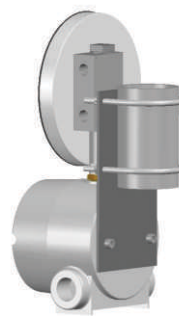
Ex-proof enclosure make	Certification	Electrical connection	Mounting
Akron Electric USA	UL, CSA, FM, CENELEC, KEMA / ATEX approved. Compliance to EN 50 014:1971+A1...A5 and EN 50 018: 1977+A1...A3. Ref: UL:E139669 / CSA:LR86146-5 KEMA: 0	2 X 3/4" NPTF conduit ports on either side as shown	Two slots provided suitable for M6 / 1/4" UNC screw.

MOUNTING BRACKETS

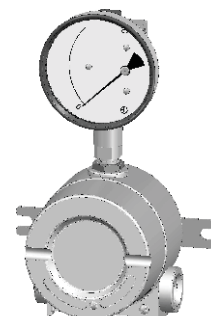
Horizontal pipe mounting



Vertical pipe mounting



Surface mounting





SELECT MODEL

1 Series	EX 200DPG			
2 Type	GS Gauge + Switch	S	Switch	
3 Body material	A Aluminum	B	Brass	
	S SS-316	M	Monel	
4 Dial size	2.5 2.5" (63 mm)	4.5	4.5" (115 mm)	
	3.5 3.5" (80 mm)	6.0	6.0" (150 mm)	
	4.0 4.0" (100 mm)			
5 Connection	4N 1/4" NPT (F) (Std.)	4B	1/4" BSP (F)	
	ZZ Special connection sizes using adaptor			
6 Porting	3 Bottom (Right side)	2	Back	
7 Case	S4 SS 304 (Std.)	S6	SS 316	
	F4 SS 304 flange			
	EP Engineering polymer (available in 2.5", 4.5", 6" only)			
8 Window	F Glass (Std.)	A	Acrylic	
	T Toughened glass	L	Safety glass	
9 Seals/Diaphragm	B Buna-N (Std.)	E	EPDM	
	V Viton			
10 Switch	Select option & Specifications			

Advantages :

Instrument automatically resets after line surges and cold start.
This eliminates balancing of differential pressure instrument after such events.

Notes

- Both enclosures have provision for surface mounting.
- For SS 316 case, please contact factory (MOQ applies).
- Liquid filling + Follower pointer available.
- Switch adjustment range between 20-100% of full scale deflection (FSD). For specific details, please contact factory.
- Minimum Order Quantity (MOQ) applies for 6.0" (150mm) dial.
- For electrical connection details, please refer to the datasheet.
- Mounting bracket: Aluminum (Standard) ; SS (Optional)

0	None
2	One SPST, with a terminal strip
4	Two SPSTs, with a terminal strip

+

SPST Specifications (AC/DC max)

1 Standard	2	3	4
10 VA	40 VA	100 VA	60 VA
100 V	230 V	300 V	240 V
0.5 Amp	1 Amp	1 Amp	3 Amp
Adjustable	Adjustable	Adjustable	Adjustable

6	One SPDT, with a terminal strip
8	Two SPDTs, with a terminal strip

+

SPDT Specifications (AC/DC max)

1 Standard	2	3
3 VA	5 VA	5 VA
30 V	125 V	175 V
0.3 Amp	0.25 Amp	0.25 Amp
Adjustable	Adjustable	Adjustable

Example: Switch selection 21 is 1 SPST with terminal strip
with switch specifications 10VA, 100V, 0.5Amp

11 Range

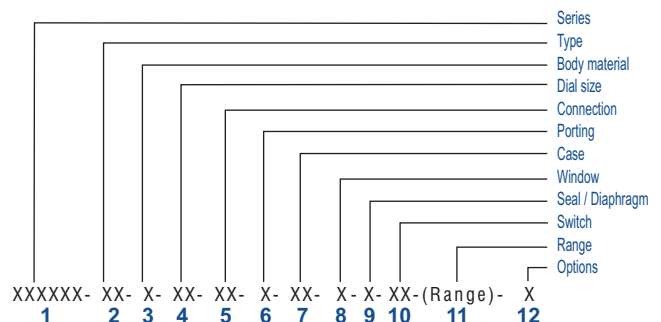
Standard ranges : (Other ranges & units on request)

Kg/cm ²	0.25	-	0.5	0.75	1	-	1.6	2	2.5	3	3.5	4	5	-	6	7	9	10
bar	0.25	-	0.5	0.75	1	-	1.6	2	2.5	3	3.5	4	5	-	6	7	9	10
mbar	250	-	500	750	1000	-	-	-	-	-	-	-	-	-	-	-	-	-
psi	-	5	8	-	15	20	25	30	-	40	50	60	-	80	-	100	-	-
kPa	25	-	50	75	100	-	160	200	250	300	350	400	500	-	600	700	900	1000

12 Options

- O None
- A Glycerine *
- B Red follower pointer on acrylic window *
- C Customer Logo
- D Dual scale
- E Colour band
- F Filter mesh in (+) connection
- H Descending calibration (long delivery time)
- N NACE
- S Silicone oil*
- I Oxygen service (Contact factory)
- K 32mm thick body for high pressure application
- M1 2" horizontal pipe mounting bracket
- M3 2" vertical pipe mounting bracket
- * Affects accuracy

Ordering code sequence



Contact factory for special execution.



Akron Electric (USA)



Ambit Instruments Pty Ltd.
42 Titan Drive, Carrum Downs
Victoria 3201, Australia
Phone : +61 3 9776 8888
Fax : +61 3 9776 8656
Email : contact@ambitinst.com.au
Website : www.ambitinst.com.au

COMBINATIONS

Gauge + switch
(with a terminal strip inside)



Switch



Gauge + switch
(Without Ex-proof enclosure)

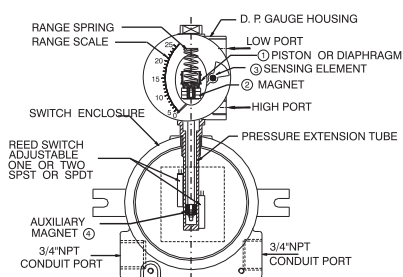


Switch*
(Without Ex-proof enclosure)



*Locally available explosion proof enclosures can be used

ASSEMBLY



EX 200DGR

ΔP Range: 0 to 0.25 upto 7 bar
0 to 5 upto 100 psi

Specifications

Accuracy	±2% of the FSD (Ascending)
Migration	No migration. Zero leakage from high to low port
Range	0-0.25 to 0-7 bar or equivalent range in other units
First marking on the scale	15% of the FSD
Sensing element	Diaphragm
Wetted parts	Diaphragm, Body material, SS 302 spring & ceramic magnet
Case material & dial size	Stainless steel (SS 304): 2.5", 3.5", 4", 4.5", 6.0" Engineering polymer: 2.5", 4.5", 6.0"
Mounting	Surface, 2" pipe mounting
Maximum working pressure	200 bar / 3000 psi
Maximum process temperature	0 to 80°C (32 to 175°F)
Body material	Aluminum, Brass, SS 316, Monel
Diaphragm	Buna-N, Viton, EPDM
Window	Float glass(Std.), toughened glass, acrylic & safety glass.
Connection	1/4" NPT(F) (Std.), 1/4" BSP(F) through adaptor
Porting	Bottom (right side), back
Over range protection	Up to the max. working pressure from high side only Never pressurize only LP side
Protection for gauge & switch	IP 65 / NEMA-4

Options

Liquid filling (glycerine/ silicone)
Red follower pointer
Customer logo
Dual scale
Color band
Filter mesh in (+) connection
Descending calibration

Switches (Adjustable in 30-100% of FSD)

1 or 2 SPSTs with a terminal strip
1 or 2 SPDTs with a terminal strip

Available in engineering polymer (EP) Case



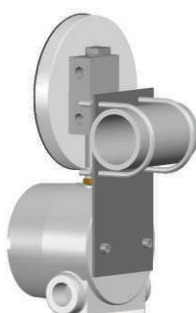
- Removable glass
- Strong and durable
- Panel mounting possible
- Condensation can be cleaned
- Light weight

Enclosure Approvals

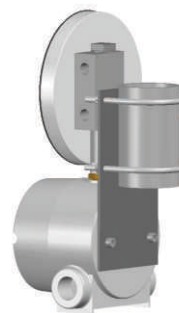
Ex-proof enclosure make	Certification	Electrical connection	Mounting
Akron Electric USA	UL, CSA, FM, CENELEC, KEMA / ATEX approved. Compliance to EN 50 014:1971+A1...A5 and EN 50 018: 1977+A1...A3. Ref: UL:E139669 / CSA:LR86146-5 KEMA: 0	2 X 1/4" NPTF conduit ports on either side as shown	Two slots provided suitable for M6 / 1/4" UNC screw.

MOUNTING BRACKETS

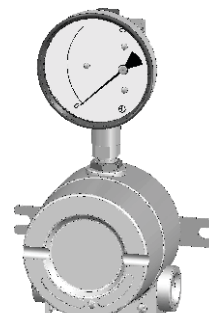
Horizontal pipe mounting



Vertical pipe mounting



Surface mounting





SELECT MODEL

1 Series	EX 200DGR			
2 Type	GS Gauge + Switch	S	Switch	
3 Body material	A Aluminum	B	Brass	
	S SS-316	M	Monel	
4 Dial size	2.5 2.5" (63 mm)	4.5	4.5" (115 mm)	
	3.5 3.5" (80 mm)	6.0	6.0" (150 mm)	
	4.0 4.0" (100 mm)			
5 Connection	4N 1/4" NPT (F) (Std.)	4B	1/4" BSP (F) (MOQ)	
	ZZ Special connection sizes using adaptor			
6 Porting	3 Bottom (Right side)	2	Back	
7 Case	S4 SS 304 (Std.)	S6	SS 316	
	F4 SS 304 flange			
	EP Engineering polymer (available in 2.5", 4.5", 6" only)			
8 Window	F Glass (Std.)	A	Acrylic	
	T Toughened glass	L	Safety glass	
9 Seals/Diaphragm	B Buna-N (Std.)	E	EPDM	
	V Viton			
10 Switch	Select option & Specifications			

Advantages :

Instrument automatically resets after line surges and cold start.
This eliminates balancing of differential pressure instrument after such events.

Notes

- Both enclosures have provision for surface mounting.
- For SS 316 case, please contact factory (MOQ applies).
- Liquid filling + Follower pointer available.
- Switch adjustment range between 30-100% of full scale deflection (FSD). For specific details, please contact factory.
- Minimum Order Quantity (MOQ) applies for 6.0" (150mm) dial.
- For electrical connection details, please refer to the datasheet.
- Mounting bracket: Aluminum (Standard) ; SS (Optional)

0	None
2	One SPST, with a terminal strip
4	Two SPSTs, with a terminal strip

+

SPST Specifications (AC/DC max)

1 Standard	2	3	4
10 VA	40 VA	100 VA	60 VA
100 V	230 V	300 V	240 V
0.5 Amp	1 Amp	1 Amp	3 Amp
Adjustable	Adjustable	Adjustable	Adjustable

6	One SPDT, with a terminal strip
8	Two SPDTs, with a terminal strip

+

SPDT Specifications (AC/DC max)

1 Standard	2	3
3 VA	5 VA	5 VA
30 V	125 V	175 V
0.3 Amp	0.25 Amp	0.25 Amp
Adjustable	Adjustable	Adjustable

Example: Switch selection 21 is 1 SPST with terminal strip
with switch specifications 10VA, 100V, 0.5Amp

11 Range

Standard ranges : (Other ranges & units on request)

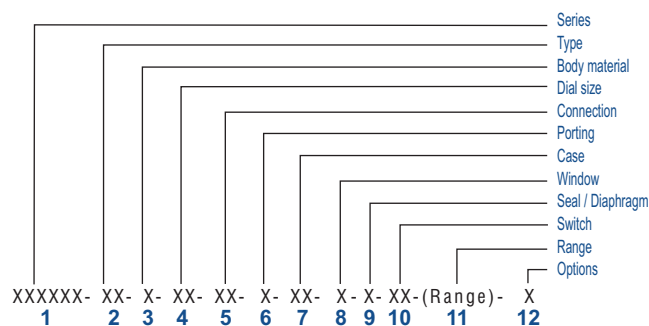
Kg/cm ²	0.25	-	0.5	0.75	1	-	2	2.5	-	4	7
bar	0.25	-	0.5	0.75	1	-	2	2.5	-	4	7
mbar	250	-	-	750	-	-	-	-	-	-	-
psi	-	5	7	-	15	25	30	-	40	60	100
kPa	25	-	50	75	100	-	200	250	-	400	700

12 Options

0	None
A	Glycerine *
B	Red follower pointer on acrylic window *
C	Customer Logo
D	Dual scale
E	Colour band
F	Filter mesh in (+) connection
H	Descending calibration (long delivery time)
N	NACE
S	Silicone oil*
I	Oxygen service (Contact factory)
M1	2" horizontal pipe mounting bracket
M3	2" vertical pipe mounting bracket

* Affects accuracy

Ordering code sequence



Contact factory for special execution.



Akron Electric (USA)



Ambit Instruments Pty Ltd.
42 Titan Drive, Carrum Downs
Victoria 3201, Australia
Phone : +61 3 9776 8888
Fax : +61 3 9776 8656
Email : contact@ambitinst.com.au
Website : www.ambitinst.com.au

COMBINATIONS

Gauge+switch
(with a terminal strip inside)



Switch



Gauge+switch
(Without Ex-proof enclosure)

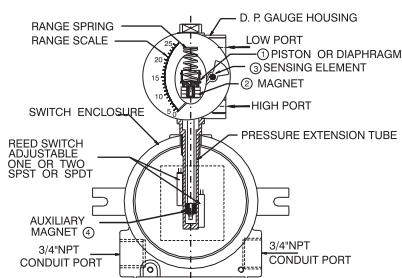


Switch*
(Without Ex-proof enclosure)



*Locally available explosion proof enclosures can be used

ASSEMBLY



EX 300DGC

ΔP Range: 0 to 0.075 upto 4 bar
0 to 1 upto 60 psi

Specifications

Accuracy	±2% of the FSD (Ascending)
Migration	No migration. Zero leakage from high to low port
Range	0-0.075 to 0-4 bar or equivalent range in other units
First marking on the scale	15% of the FSD
Sensing element	Diaphragm
Wetted parts	Diaphragm, body material, SS 302 spring & ceramic magnet
Case material & dial size	Stainless steel (SS 304): 2.5", 3.5", 4", 4.5", 6.0" Engineering polymer: 2.5", 4.5", 6.0"
Mounting	As per the explosion proof box drawings
Maximum working pressure	100 bar / 1500 psi
Maximum process temperature	0 to 80°C (32 to 175°F)
Body material	Aluminum, Brass, SS 316, Monel
Diaphragm	Buna-N, Viton, EPDM
Window	Float glass(Std.), toughened glass, acrylic & safety glass.
Connection	1/4" NPT(F) (Std.), 1/4" BSP(F) through adaptor
Porting	Bottom (right side), back
Over range protection	Up to the max. working pressure from high side
Protection for gauge & switch	IP 65 / NEMA-4

Options

Liquid filling (glycerine/ silicone)
Red follower pointer
Customer logo
Dual scale
Color band
Filter mesh in (+) connection
Descending calibration

Switches (Adjustable in 30-100% of FSD)

1 or 2 SPSTs with a terminal strip
1 or 2 SPDTs with a terminal strip

Available in engineering polymer (EP) Case



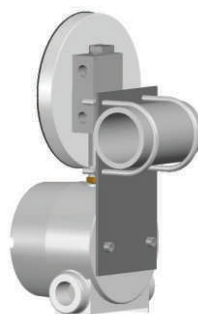
- Removable glass
- Strong and durable
- Panel mounting possible
- Condensation can be cleaned
- Light weight

Enclosure Approvals

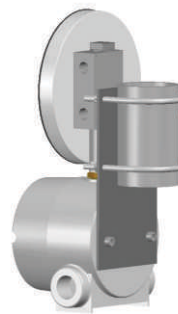
Ex-proof enclosure make	Certification	Electrical connection	Mounting
Akron Electric USA	UL, CSA, FM, CENELEC, KEMA / ATEX approved. Compliance to EN 50 014:1971+A1...A5 and EN 50 018: 1977+A1...A3. Ref: UL:E139669 / CSA:LR86146-5 KEMA: 0	2 X ¼" NPTF conduit ports on either side as shown	Two slots provided suitable for M6 / ¼" UNC screw.

MOUNTING BRACKETS

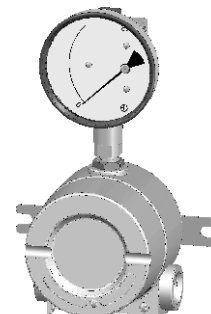
Horizontal pipe mounting



Vertical pipe mounting



Surface mounting





SELECT MODEL

1 Series	EX 300DGC			
2 Type	GS Gauge + Switch	S	Switch	
3 Body material	A Aluminum	B	Brass	
	S SS-316	M	Monel	
4 Dial size	2.5 2.5" (63 mm)	4.5	4.5" (115 mm)	
	3.5 3.5" (80 mm)	6.0	6.0" (150 mm)	
	4.0 4.0" (100 mm)			
5 Connection	4N 1/4" NPT (F) (Std.)	4B	1/4" BSP (F) (MOQ)	
	ZZ Special connection sizes using adaptor			
6 Porting	3 Bottom (Right side)	2	Back	
7 Case	S4 SS 304 (Std.)	S6	SS 316	
	F4 SS 304 flange			
	EP Engineering polymer (available in 2.5", 4.5", 6" only)			
8 Window	F Glass (Std.)	A	Acrylic	
	T Toughened glass	L	Safety glass	
9 Seals/Diaphragm	B Buna-N (Std.)	E	EPDM	
	V Viton			
10 Switch	Select option & Specifications			

Advantages :

Instrument automatically resets after line surges and cold start.
This eliminates balancing of differential pressure instrument after such events.

Notes

- Both enclosures have provision for surface mounting.
- For SS 316 case, please contact factory (MOQ applies).
- Liquid filling + Follower pointer available.
- Switch adjustment range between 20-100% of full scale deflection (FSD). For specific details, please contact factory.
- Minimum Order Quantity (MOQ) applies for 6.0" (150mm) dial.
- For electrical connection details, please refer to the datasheet.
- Mounting bracket: Aluminum (Standard) ; SS (Optional)

0	None
2	One SPST, with a terminal strip
4	Two SPSTs, with a terminal strip

+

SPST Specifications (AC/DC max)

1 Standard	2	3	4
10 VA	40 VA	100 VA	60 VA
100 V	230 V	300 V	240 V
0.5 Amp	1 Amp	1 Amp	3 Amp
Adjustable	Adjustable	Adjustable	Adjustable

6	One SPDT, with a terminal strip
8	Two SPDTs, with a terminal strip

+

SPDT Specifications (AC/DC max)

1 Standard	2	3
3 VA	5 VA	5 VA
30 V	125 V	175 V
0.3 Amp	0.25 Amp	0.25 Amp
Adjustable	Adjustable	Adjustable

Example: Switch selection 21 is 1 SPST with terminal strip
with switch specifications 10VA, 100V, 0.5Amp

11 Range

Standard ranges : (Other ranges & units on request)

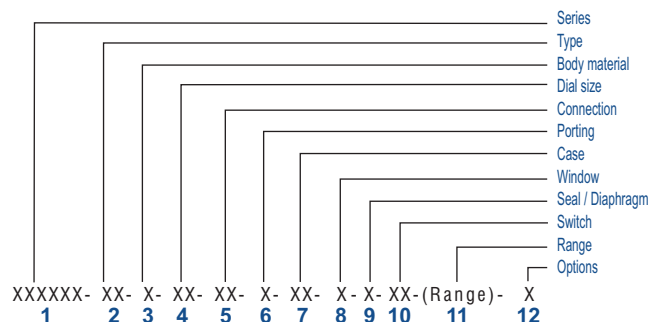
Kg/cm ²	0.075	0.25	-	0.5	0.75	1	-	1.6	2	2.5	3	-	4
bar	0.075	0.25	-	0.5	0.75	1	-	1.6	2	2.5	3	-	4
mbar	75-	250	-	-	750	-	-	-	-	-	-	-	-
psi	1	-	5	8	-	15	20	25	30	-	40	50	60
kPa	-	25	-	50	75	100	-	160	200	250	300	-	400

12 Options

- O None
- A Glycerine *
- B Red follower pointer on acrylic window *
- C Customer Logo
- D Dual scale
- E Colour band
- F Filter mesh in (+) connection
- H Descending calibration (long delivery time)
- N NACE
- S Silicone oil*
- I Oxygen service (Contact factory)
- M1 2" horizontal pipe mounting bracket
- M3 2" vertical pipe mounting bracket

* Affects accuracy

Ordering code sequence



Contact factory for special execution.



Akron Electric (USA)

COMBINATIONS

Gauge+switch
(with a terminal strip inside)



Switch



Gauge+switch
(Without Ex-proof enclosure)

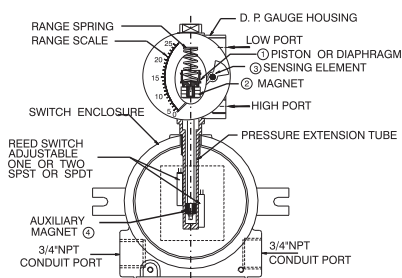


Switch*
(Without Ex-proof enclosure)



*Locally available explosion proof enclosures can be used

ASSEMBLY



Ambit Instruments Pty Ltd.
42 Titan Drive, Carrum Downs
Victoria 3201, Australia
Phone : +61 3 9776 8888
Fax : +61 3 9776 8656
Email : contact@ambitinst.com.au
Website : www.ambitinst.com.au

EX 400DGC

**ΔP Range: 0 to 100 upto 600 mm H₂O
0 to 4 upto 25 inch H₂O**

Specifications

Accuracy	±2% of the FSD (Ascending)
Migration	No migration. Zero leakage from high to low port
Range	0-100 to 0-600 mmH ₂ O or equivalent range in other units
First marking on the scale	15% of the FSD
Sensing element	Diaphragm
Wetted parts	Diaphragm, body material, SS 302 spring & ceramic magnet
Case material & dial size	Stainless steel (SS 304): 2.5", 3.5", 4", 4.5", 6.0" Engineering polymer: 2.5", 4.5", 6.0"
Mounting	As per the explosion proof box drawings
Maximum working pressure	35 bar / 500 psi.
Maximum process temperature	0 to 80°C (32 to 175°F)
Body material	Aluminum, Brass & SS 316
Diaphragm	Buna-N, Viton, EPDM
Window	Float glass(Std.), toughened glass, acrylic & safety glass.
Connection	1/4" NPT(F) (Std.), 1/4" BSP(F) through adaptor
Porting	Bottom (right side), back
Over range protection	Up to the max. working pressure from high side
Protection for gauge & switch	IP 65 / NEMA-4

Options

Liquid filling (glycerine/ silicone)
Red follower pointer
Customer logo
Dual scale
Color band
Filter mesh in (+) connection
Descending calibration

Switches (Adjustable in 40-100% of FSD)

1 or 2 SPSTs with a terminal strip
1 or 2 SPDTs with a terminal strip

Available in engineering polymer (EP) Case



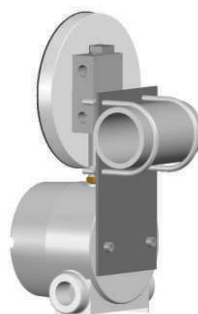
- Removable glass
- Strong and durable
- Panel mounting possible
- Condensation can be cleaned
- Light weight

Enclosure Approvals

Ex-proof enclosure make	Certification	Electrical connection	Mounting
Akron Electric USA	UL, CSA, FM, CENELEC, KEMA / ATEX approved. Compliance to EN 50 014:1971+A1...A5 and EN 50 018: 1977+A1...A3. Ref: UL:E139669 / CSA:LR86146-5 KEMA: 0	2 X ¼" NPTF conduit ports on either side as shown	Two slots provided suitable for M6 / ¼" UNC screw.

MOUNTING BRACKETS

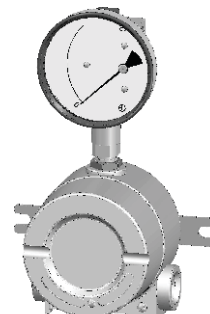
Horizontal pipe mounting



Vertical pipe mounting



Surface mounting





SELECT MODEL

1 Series	EX 400DGC			
2 Type	GS Gauge + Switch	S	Switch	
3 Body material	A Aluminum	B	Brass	
	S SS-316			
4 Dial size	2.5 2.5" (63 mm)	4.5	4.5" (115 mm)	
	3.5 3.5" (80 mm)	6.0	6.0" (150 mm)	
	4.0 4.0" (100 mm)			
5 Connection	4N 1/4" NPT (F) (Std.)	4B	1/4" BSP (F)	
	ZZ Special connection sizes using adaptor			
6 Porting	3 Bottom (Right side)	2	Back	
7 Case	S4 SS 304 (Std.)	S6	SS 316	
	F4 SS 304 flange			
	EP Engineering polymer (available in 2.5", 4.5", 6" only)			
8 Window	F Glass (Std.)	A	Acrylic	
	T Toughened glass	L	Safety glass	
9 Seals/Diaphragm	B Buna-N (Std.)	E	EPDM	
	V Viton			
10 Switch	Select option & Specifications			

Advantages :

Instrument automatically resets after line surges and cold start.
This eliminates balancing of differential pressure instrument after such events.

Notes

- Both enclosures have provision for surface mounting.
- For SS 316 case, please contact factory (MOQ applies).
- Liquid filling + Follower pointer available.
- Switch adjustment range between 40-100% of full scale deflection (FSD). For specific details, please contact factory.
- Minimum Order Quantity (MOQ) applies for 6.0" (150mm) dial.
- For electrical connection details, please refer to the datasheet.
- Mounting bracket: Aluminum (Standard) ; SS (Optional)

0	None
2	One SPST, with a terminal strip
4	Two SPSTs, with a terminal strip

+

SPST Specifications (AC/DC max)

1 Standard	2	3	4
10 VA	40 VA	100 VA	60 VA
100 V	230 V	300 V	240 V
0.5 Amp	1 Amp	1 Amp	3 Amp
Adjustable	Adjustable	Adjustable	Adjustable

6	One SPDT, with a terminal strip
8	Two SPDTs, with a terminal strip

+

SPDT Specifications (AC/DC max)

1 Standard	2	3
3 VA	5 VA	5 VA
30 V	125 V	175 V
0.3 Amp	0.25 Amp	0.25 Amp
Adjustable	Adjustable	Adjustable

Example: Switch selection 21 is 1 SPST with terminal strip
with switch specifications 10VA, 100V, 0.5Amp

11 Range

Standard ranges : (Other ranges & units on request)

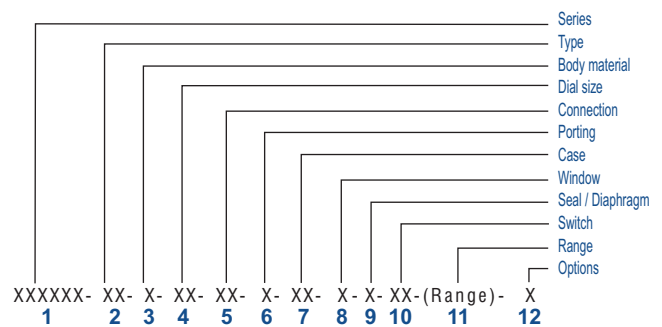
mm H2O	-	100	125	250	600
In. H2O	-	4	5	10	25
mbar	-	5	-	25	60
kPa	-	-	1.25	2.5	6

12 Options

0	None
A	Glycerine *
B	Red follower pointer on acrylic window *
C	Customer Logo
D	Dual scale
E	Colour band
F	Filter mesh in (+) connection
H	Descending calibration (long delivery time)
N	NACE
S	Silicone oil*
I	Oxygen service (Contact factory)
M1	2" horizontal pipe mounting bracket
M3	2" vertical pipe mounting bracket

* Affects accuracy

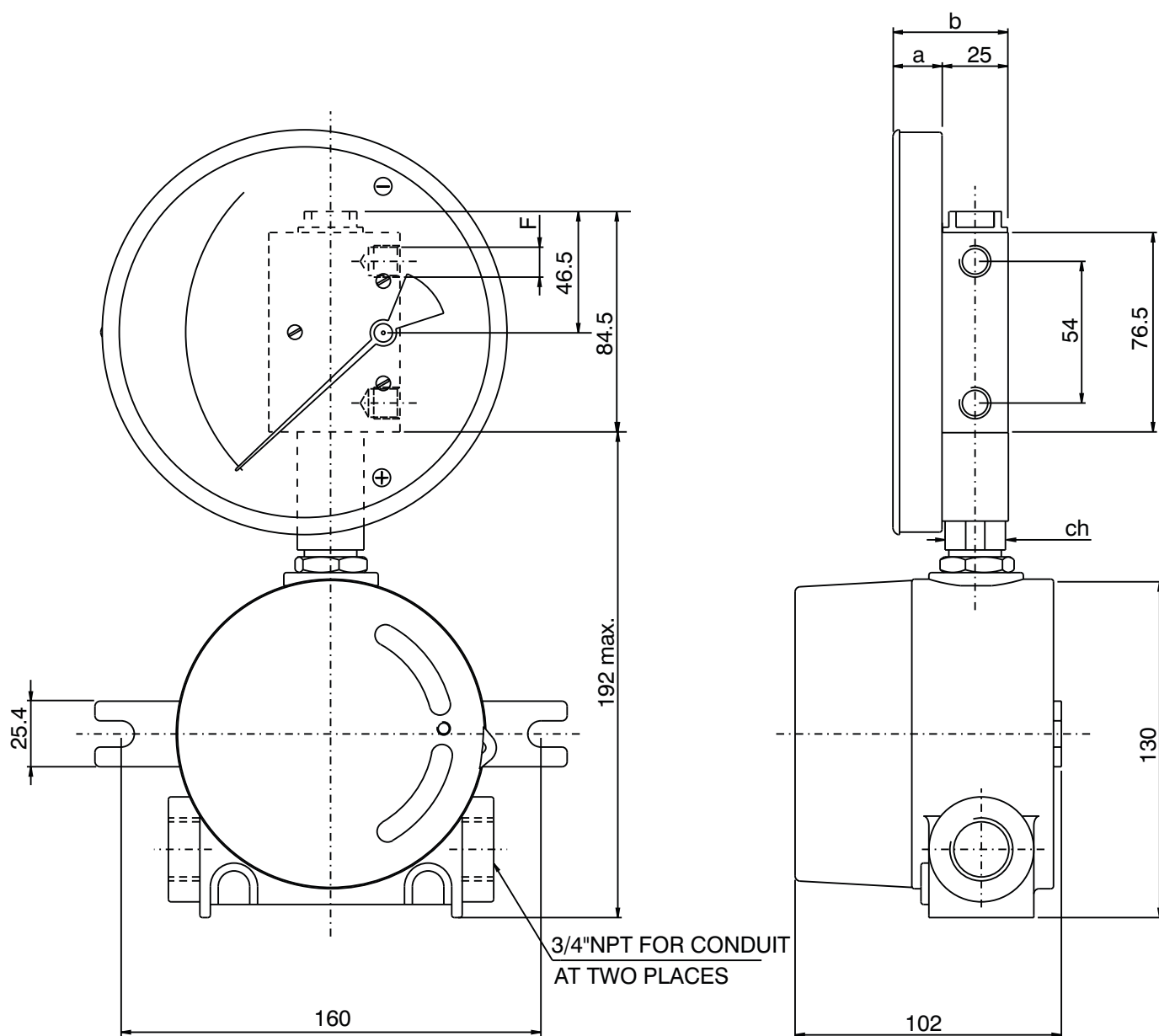
Ordering code sequence



Contact factory for special execution.



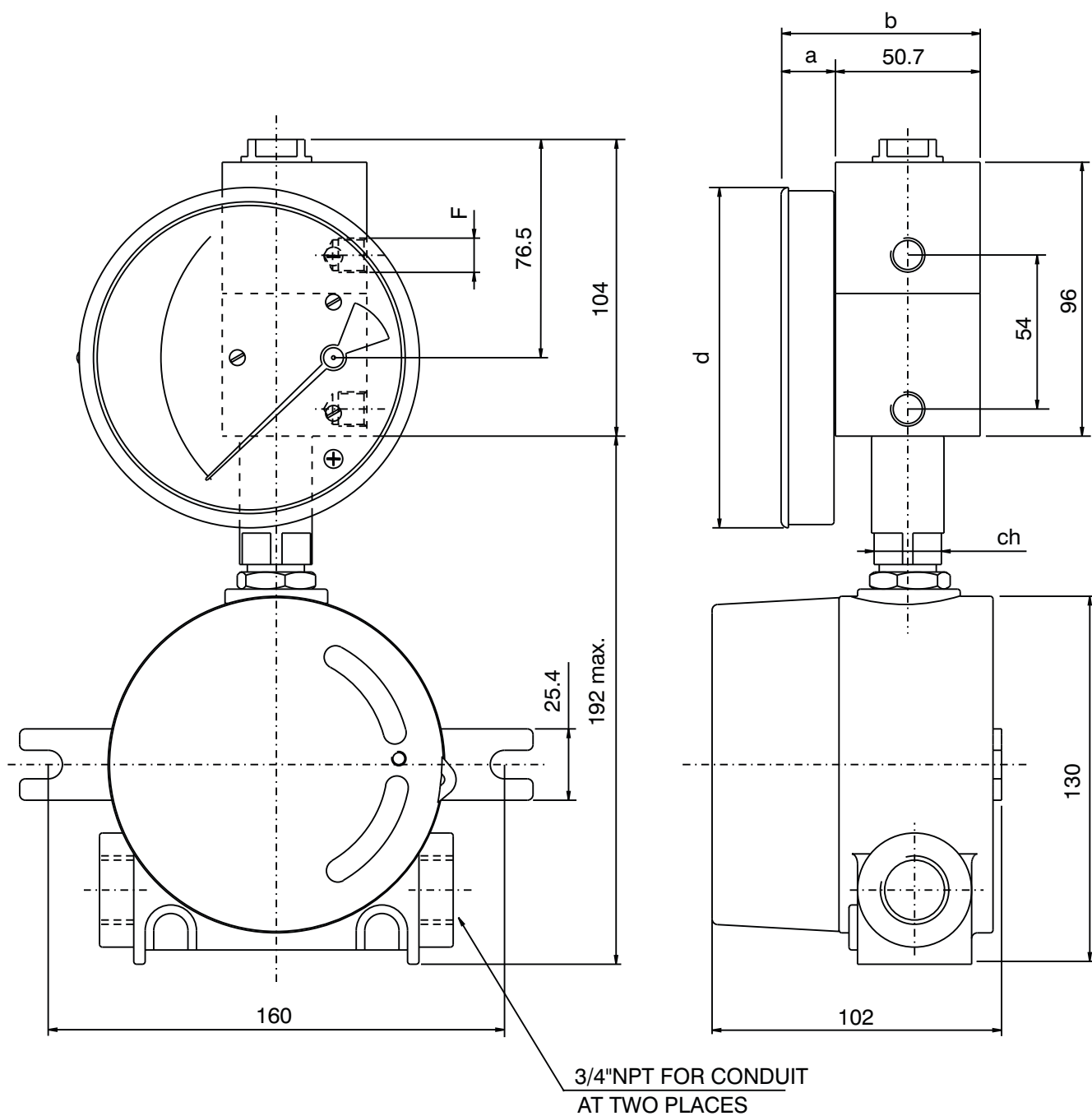
STANDARD DIMENSIONS (Model 200 DPG)



DIAL Ø	F	a	b	d	ch
80 (3.5")	1/4" BSP - 1/4" NPT	19	44	83.0	22
100 (4.0")	1/4" BSP - 1/4" NPT	19	44	104.3	22
115 (4.5")	1/4" BSP - 1/4" NPT	19	44	119.7	22
150 (6.0")	1/4" BSP - 1/4" NPT	19	44	154.3	22



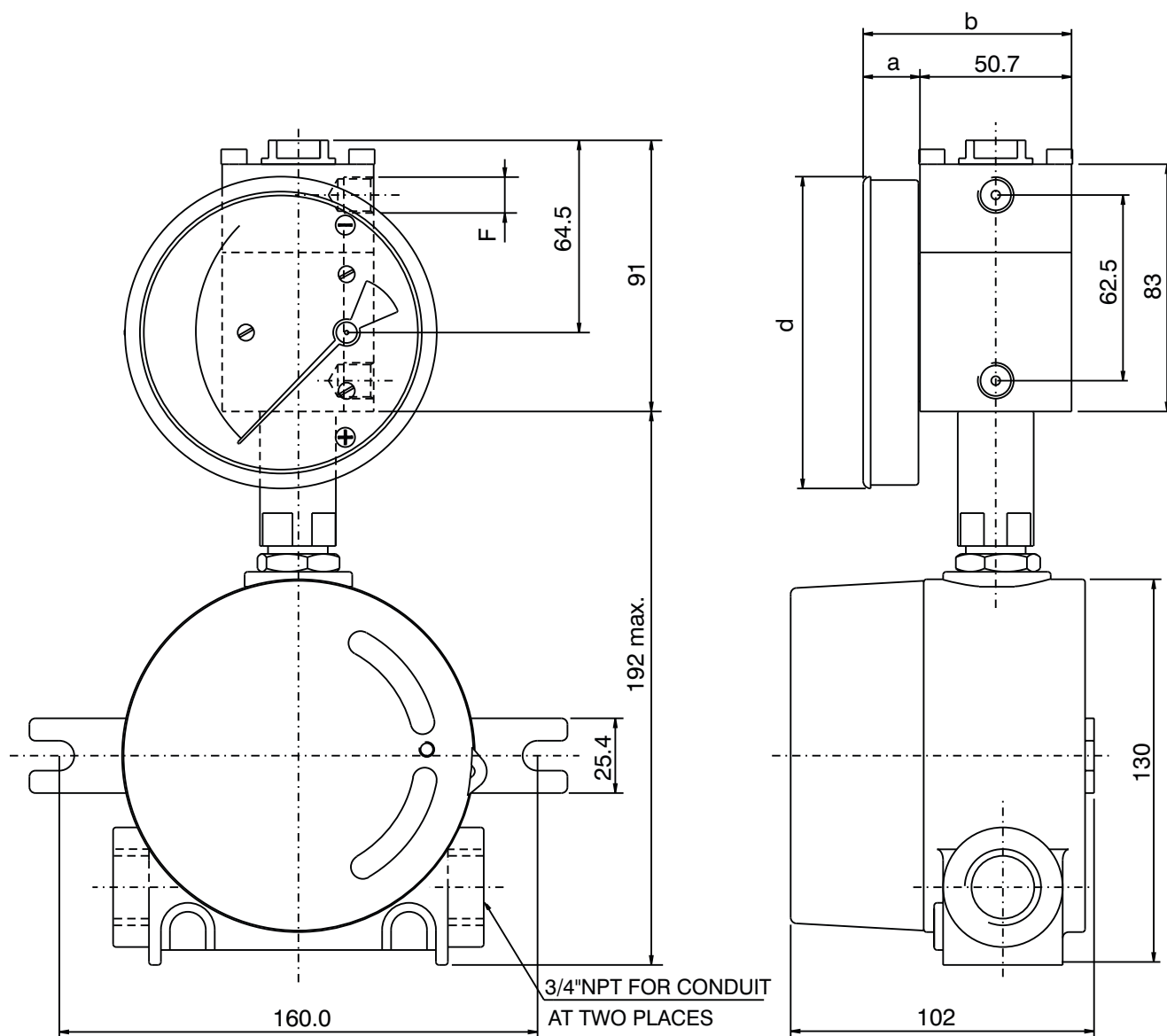
STANDARD DIMENSIONS (Model 200 DGR)



DIAL Ø	F	a	b	d	ch
80 (3.5")	1/4" BSP - 1/4" NPT	19	69.7	83.0	22
100 (4.0")	1/4" BSP - 1/4" NPT	19	69.7	104.3	22
115 (4.5")	1/4" BSP - 1/4" NPT	19	69.7	119.7	22
150 (6.0")	1/4" BSP - 1/4" NPT	19	69.7	154.3	22



STANDARD DIMENSIONS (Model 300 DGC)

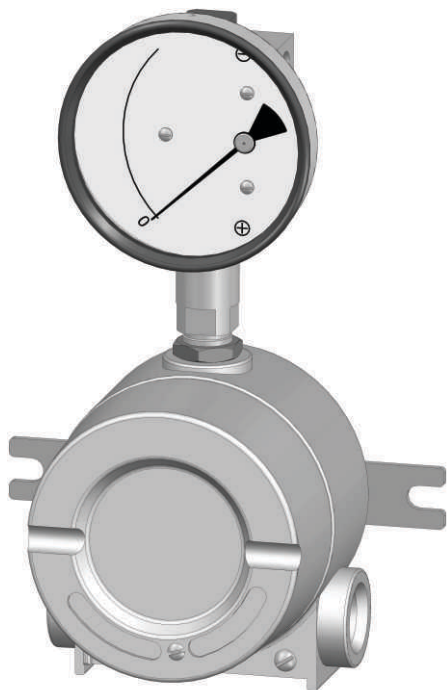


DIAL Ø	F	a	b	d	ch
80 (3.5")	1/4" BSP - 1/4" NPT	19	69.7	83.0	22
100 (4.0")	1/4" BSP - 1/4" NPT	19	69.7	104.3	22
115 (4.5")	1/4" BSP - 1/4" NPT	19	69.7	119.7	22
150 (6.0")	1/4" BSP - 1/4" NPT	19	69.7	154.3	22

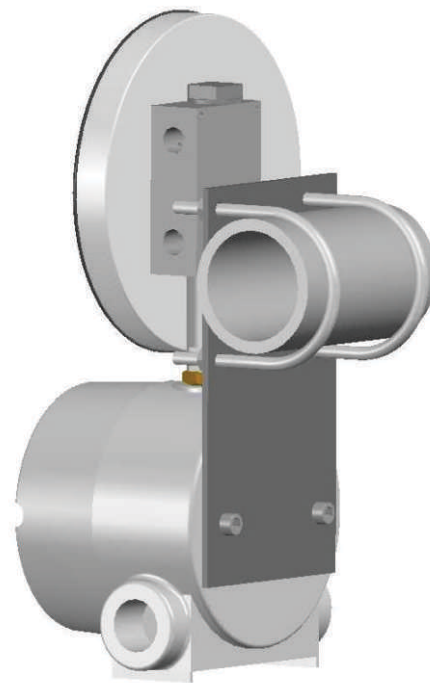


MOUNTING COMBINATIONS

SURFACE MOUNTING



HORIZONTAL PIPE MOUNTING



VERTICAL PIPE MOUNTING

